



Kaiser Permanente Southern California 2022 Community Health Snapshot

Our commitment to our communities

Our enduring mission is to improve the health of our members and the communities we serve. Each day, we strive to achieve our mission by providing high-quality health care and affordable health coverage to nearly a quarter of the population of Southern California.

We also recognize that good health requires both health care and healthier, equitable, and just communities. Our Community Health Needs Assessment conducted throughout Southern California reveal social factors and conditions in our communities that deeply influence health, such as economic opportunity, housing stability and affordability, access to nutritious food, education, mental health resources, and access to health care for those with limited means.

In 2022, Kaiser Permanente Southern California invested \$906,162,343 to address these challenges and improve community health. This included a substantial increase in our participation in the Medi-Cal program, charity care, and continued strong commitment to health professions education and research. Our community partnerships focused on reducing homelessness, fostering diverse small business growth, promoting individual financial health, improving resilience in schools for staff and students, connecting patients with community resources to address their social needs, and supporting the medical safety net. In addition, we continue to incorporate health equity and community health lenses into our business planning as illustrated by the rise of our new Watts Medical Office Building and re-built Watts Counseling and Learning Center, scheduled to open in 2024.

This Community Health Snapshot offers an overview and examples of our commitment to improving the health of our communities. We extend our gratitude to our numerous community partners, public health colleagues, and the Kaiser Permanente community. Together, we improve the health of our communities and make lives better.



Michelle Gaskill-Hames
Interim Regional President,
Kaiser Permanente
Southern California



Ramin Davidoff, MD
Executive Medical Director
and Chair, Southern California
Permanente Medical Group



John Yamamoto
Vice President, Community Health
and Government Relations,
Kaiser Permanente Southern California

By the numbers



\$906M

Total Community Health investment



\$816M

Access to health care

- Medi-Cal
- Medical financial assistance



\$55M

Education and training

- Graduate Medical Education
- Kaiser Permanente School of Anesthesia
- Other health professions education and training programs



\$7M

Medical research

- Nursing research
- Research and Evaluation



\$10M

Grants and donations

- Economic opportunity
- Equity
- Food and nutrition security
- Housing and homelessness
- Mental health and wellness
- Safety net partnerships
- Social health
- Thriving Schools



\$18M

Direct services and program operations

- Community health operations
- INROADS Internship and Summer Youth Employment Programs
- Watts Counseling and Learning Center and Educational Outreach Program



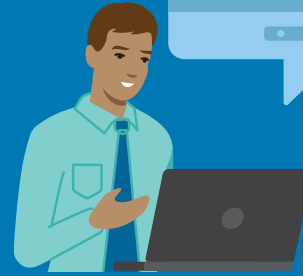
\$2M

for racial justice and equity investments



\$3.4M

for **17** community health centers and clinic alliances to improve population health management



\$4.1M

to empower and support **42** community partners in promoting economic opportunities

\$1M

for a new mental health and wellness campus



650

scholarly articles published by the Department of Research & Evaluation



\$7.1M

to support **49** organizations in preventing homelessness and supporting housing stability

\$1.5M

to improve food security, meal distribution, and policy and research



\$300,000

to improve physical, mental, and social health for 15 school districts



Medical financial assistance provided to

73,465

individuals



102,955 students and adults reached through Educational Theatre



Quality health care delivered to

1,048,920

Medi-Cal patients

Read more about our work



Our **Social Impact Investments** support different approaches to increasing the supply of affordable housing. To help some of our most vulnerable communities, we made a \$50 million investment in SDS Capital Group's Supportive Housing Fund to produce up to 2,500 units of permanent supportive housing.

Since 1967, the **Kaiser Permanente Watts Counseling and Learning Center** has provided educational therapy and enrichment, pre-school education, behavioral health counseling and training, and community partnerships without regard to ability to pay or membership status. In 2022, construction began on a rebuilt Center and new **Kaiser Permanente Watts Medical Offices** featuring adult primary care, obstetrics-gynecology, pediatrics, and mental health on a first-of-its kind shared campus, scheduled to open in early 2024.



The **Graduate Medical Education** program provides high-quality medical education founded on Permanente Medicine principles and is a critical part of building the future physician workforce for the community, while contributing to medical and research excellence at Kaiser Permanente. In 2022, the program trained 425 Kaiser Permanente residents and more than 1,500 affiliate residents and medical student rotations across 36 clinical specialty programs. Community Medicine fellows and residents also train and practice in the community with a focus on helping our most vulnerable populations and reducing health disparities.